

Energy Transfer acknowledges the many important benefits associated with healthy and diverse ecosystems as they relate to our environment as well as our company, our employees, and the communities in which we operate. We strive to minimize impacts on biodiversity in areas where we work and/or operate in accordance with all applicable laws, rules, regulations, standards and permit conditions through implementation of one or more of the following approaches:

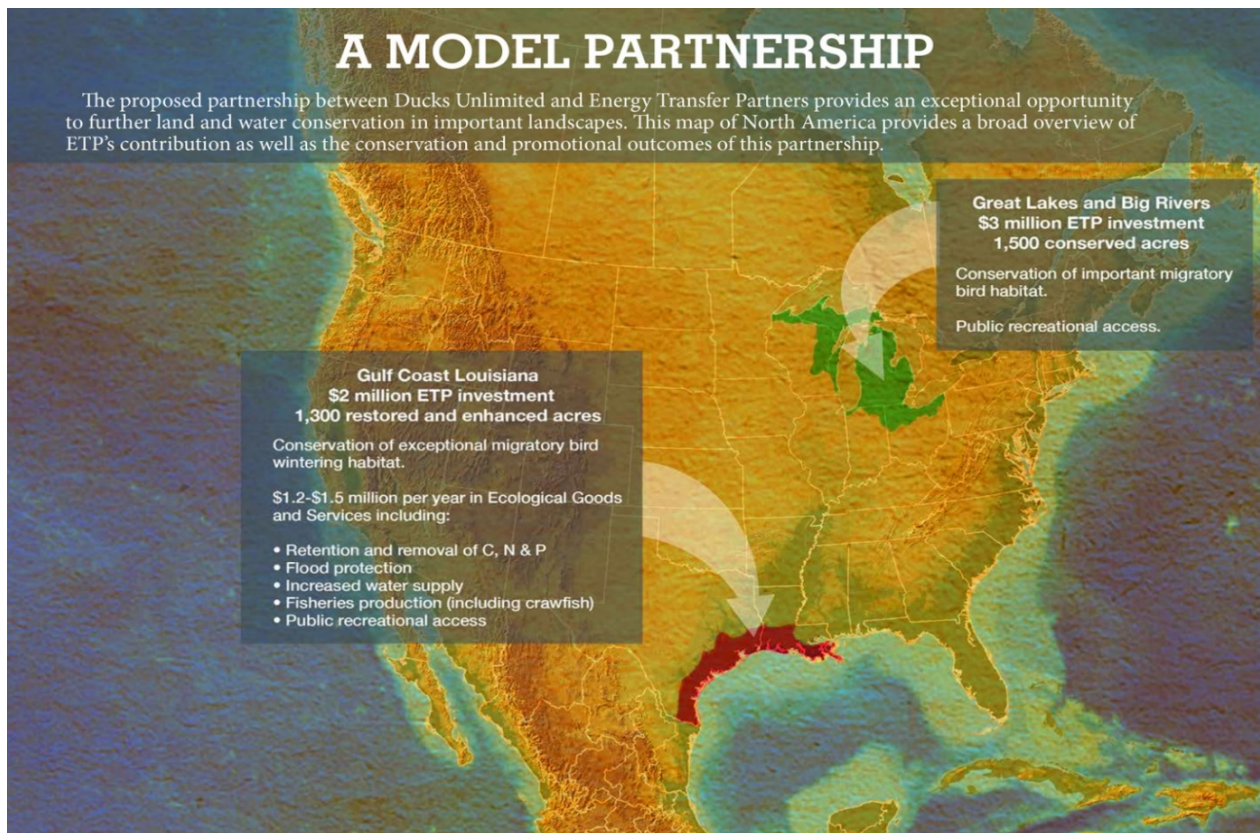
- Evaluate options and alternatives (and adjust where possible) the location, scope and/or timing of the development of a new project to avoid impacts to a vulnerable species or sensitive ecosystem.
- If possible, reduce the duration, intensity, extent and/or likelihood of impacts on the ecosystem.
- Reestablish an ecosystem's composition, structure and function to a healthy state.
- When necessary, develop and achieve measurable conservation outcomes that can mitigate residual impacts after appropriate avoidance, minimization and restoration measures have been applied.
- Work with surface owners in a cooperative fashion to minimize and restore areas disturbed by our construction or operations.

As part of our planning, development, construction and decision making processes, we take care to:

- Fully understand and comply with all applicable laws, rules, regulations, standards and permit conditions intended to protect the ecosystems in which we operate, including the requirements to conduct baseline studies and impact assessments.
- Provide adequate resources to implement this policy.
- Train employees on the importance of environmental protection and biological preservation, and provide information on the species or habitat sensitivities on the location or project which they are working.
- Engage with affected parties on biological preservation issues pertaining to our development, construction and ongoing operations, including interests specific to affected Indigenous peoples.
- Collaborate with peers through sharing of best practices.
- Report meaningful and relevant progress in accordance with project approvals, when appropriate.

Conservation Projects

- Energy Transfer participates in the Lesser Prairie Chicken (LPC) Candidate Conservation Agreement with Assurances (CCAA). The range-wide plan is a collaborative effort of the state wildlife agencies of Texas, New Mexico, Oklahoma, Kansas and Colorado and is administered by Western Association of Fish and Wildlife Agencies (“WAFWA”). The CCAA is a voluntary agreement intended to reduce or remove the threats to species that are candidates for listing under the Endangered Species Act, or that are likely to become candidates for listing.
- Energy Transfer has also joined the Texas Hornshell Mussel Candidate Conservation Agreement (“CCA”) through the CEHMM. The CCAA is a voluntary agreement intended to reduce or remove the threats to species that are candidates for listing under the Endangered Species Act, or that are likely to become candidates for listing.
- Energy Transfer has partnered with Ducks Unlimited (“DU”) to support wetland conservation efforts in Ohio and Louisiana. Through our \$5 million donation to DU, we are helping facilitate wetland restoration efforts that will not only benefit waterfowl and wildlife in these areas, but also will benefit those who depend on these wetland for their livelihoods.
<https://www.ducks.org/energytransfer>



- Energy Transfer annually donates \$10,000 to the Tri State Bird Rescue, a non-profit conservation organization in Delaware dedicated to indigenous wild bird rehabilitation.
- Energy Transfer gave \$400,000 to the Iowa Department of Natural Resources (IDNR) Fish & Game Trust Fund as part of the Dakota Access Pipeline project.
- In 2018, we assisted the Pennsylvania Game Commission and Ruffed Grouse Society with the [“Roughneck Aspen Management Project”](#) by clearing trees in order to increase the amount of early successional habitat on State Game Lands 12 and 36 in Franklin Township, Bradford County. We also helped by donating \$12,500 to the Ruffed Grouse Society.
- Energy Transfer donated \$18,000 to Pennsylvania [Trout in the Classroom](#) to support interdisciplinary programs across the state in which students learn about coldwater conservation while raising brook trout from eggs to fingerlings in a classroom aquarium. In connection with this program, we also donated \$12,000 to Trout Unlimited’s Poplar Run Conservation Project.
- In February of 2019, we helped the Pennsylvania Game Commission by paving the parking lot and walking trail (“Willow Point Trail”) for State Game Lands 46 in Lebanon and Lancaster counties.

