

webMETER

measurement data access

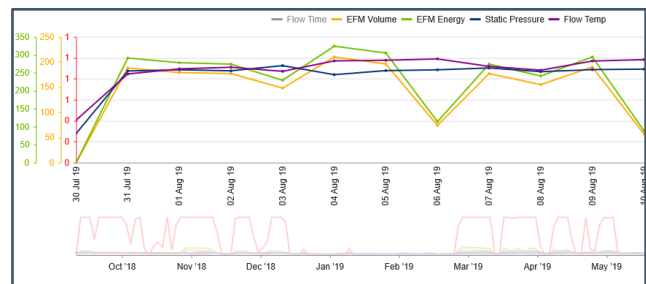
What is webMETER?

Energy Transfer provides for its customers unprecedented access to daily and monthly measurement information, with added ability to create automated data exports in various customizable formats. This is the best, most expedient way to retrieve critical measurement data for your company. And the best part... since it's web-based, it's just one click away.

View Data

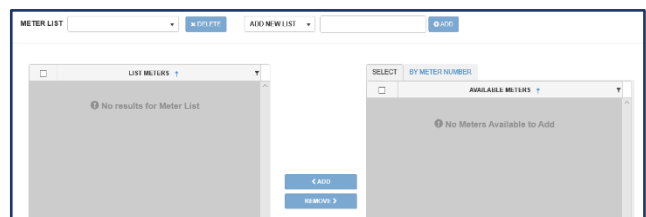
Users are able to view and download data...

- ✓ Chromatograph
- ✓ Analysis
- ✓ Volume
- ✓ Interactive Charts
- ✓ Map
- ✓ SCADA Status



Organize Meter Access

Users can create their own *Meter Lists* in order to run reports and view data more quickly on the specific meters they need.



Reports & Exports

Multiple export options allow users and companies to retrieve data and integrate it into their own systems for further use...

- Export Data** – on demand and/or scheduled
- Delivery** – auto email, FTP, SFTP
- File Type** – CSV, TAB, Excel
- Custom format data columns to fit users system**

Meter ID	Gravity	HV Dry	HV Sat	HV AsDel	C1	C2	C3	I C4	n C4	I C5	n C5	C6	C7
3 94	0.7689	1318.9	1296.4	1319	74.0722	13.2719	6.9941	0.7251	2.0447	0.3983	0.4595	0.6455	0.1010
3 35	0.8531	1459.1	1434.5	1459.1	65.4120	15.2666	11.1933	1.2464	3.7860	0.5810	0.5866	0.3366	0.1010
5 07	0.7487	1295.2	1273.2	1290.5	77.6658	11.1275	5.1126	0.7431	1.7093	0.4384	0.5047	1.0668	0.1010
5 54	0.7025	1182.4	1162.3	1162.3	79.3396	8.3897	3.8142	0.5261	1.2120	0.3292	0.3312	0.5203	0.1010
5 56	0.8222	534.6	525.5	525.5	39.3652	3.4667	1.1487	0.1345	0.3040	0.0760	0.0818	0.2933	0.1010
5 57	0.7657	1133.1	1113.8	1113.8	74.5672	8.3958	2.7742	0.6120	1.1429	0.4775	0.3361	0.8878	0.1010
5 58	0.7286	1056.4	1036.4	1036.4	77.6692	6.7913	2.5843	0.4163	0.6638	0.2025	0.1320	0.2756	0.1010
5 59	0.8124	1131.9	1112.7	1112.7	69.1879	9.3614	4.1058	0.6017	1.2053	0.4127	0.3543	0.9342	0.1010
5 60	0.8067	1278.1	1256.4	1256.4	73.1571	7.8137	5.3602	0.9713	2.2524	0.7698	0.7146	1.3760	0.1010
5 61	0.7763	1221.2	1200.4	1200.4	72.2570	8.2793	4.2386	0.5840	1.7936	0.6594	0.7564	1.3943	0.1010



webMETER

measurement data access

FAQ's

- Can I get a daily report or schedule it?** *Yes. See previous page.*
- Can I schedule an automated data export?** *Yes. See previous page.*
- Can I check for imbalances?** *No. webMETER does not include system balance data.*
- Is this the same as ETConnect?** *No. ETConnect is a service that provides customers with access to gas nominations within our pipeline management system. webMETER does not integrate with ETConnect.*
- Can my company have generic access to our company's meters?** *No. For legal reasons, access to meters is based on individuals who are approved by their company. However, we can offer access to multiple users.*
- What kind of data will reports show?** *See previous page.*
- Can I get an hourly report?** *Not right now, but it has been identified as a future enhancement.*

What Do I Do Next?

To learn more about accessing our webMETER system, email us at conadmin@energytransfer.com. Contract approval and data access agreements are required.

